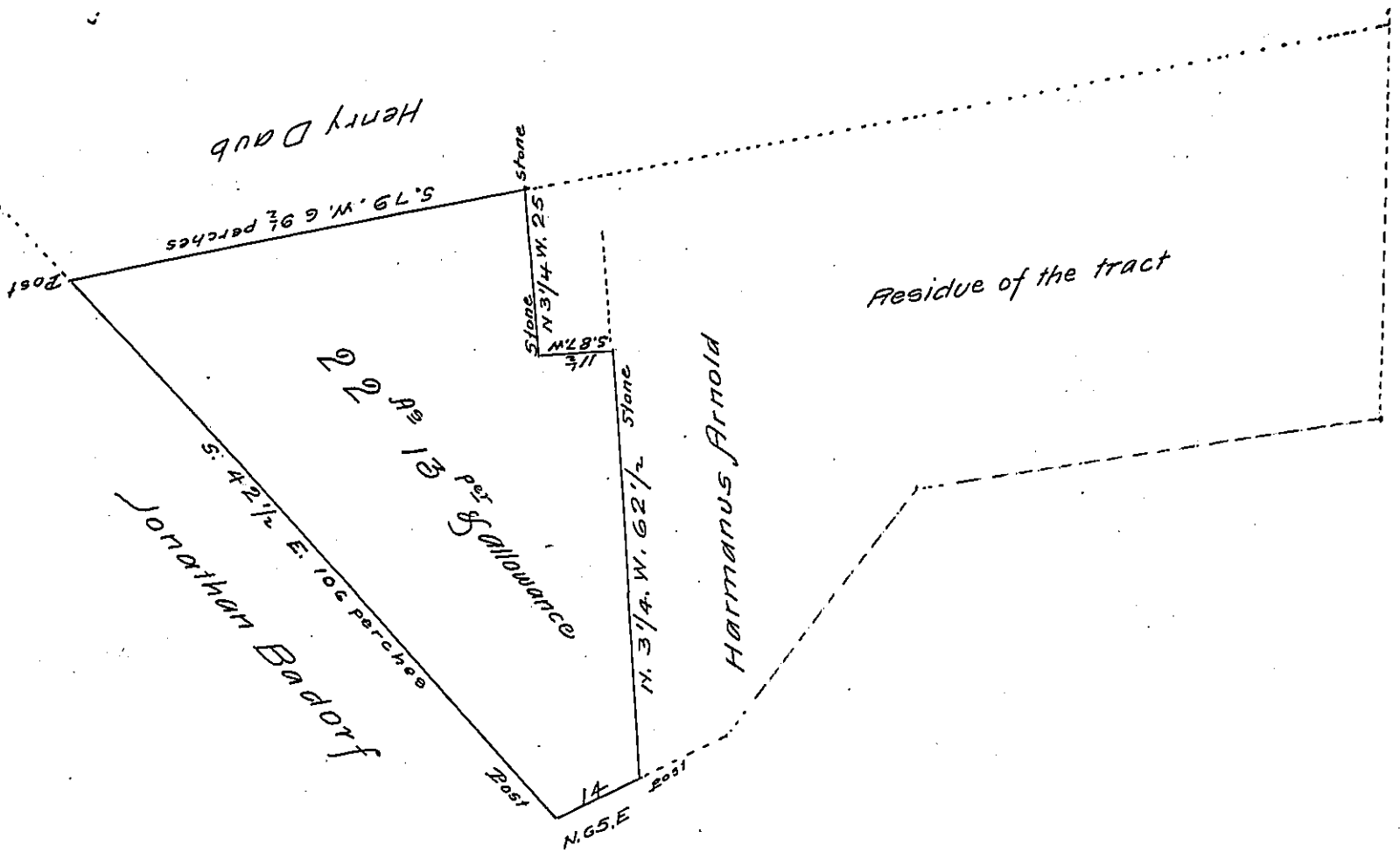


FORM NO. 1.



Surveyed Jan. 25th 1817 for Jonathan Badorf the above described Tract of land situate in Heidleberg Township Lebanon County containing Twenty two acres and thirteen perches and allowance part 71 acres on Warrant of Harmanus Walburn dated the 3^d day of February 1786

Thomas Smith D S

To Richard Leech Esq^r

Surveyor General Pa

IN TESTIMONY that the above is a copy of the original remaining on file in the Department of Internal Affairs of Pennsylvania, made conformably to an Act of Assembly approved the 16th day of February 1833, I have hereunto set my hand and caused the Seal of said Department to be affixed at Harrisburg, this third day of May 1907

Richard B. Brown
Secretary of Internal Affairs.